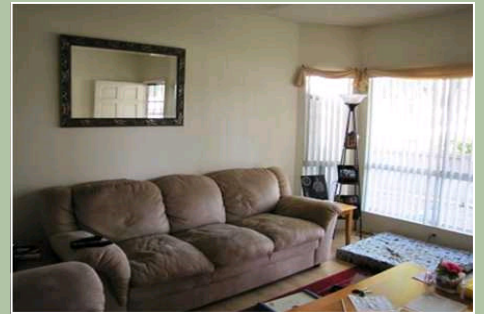
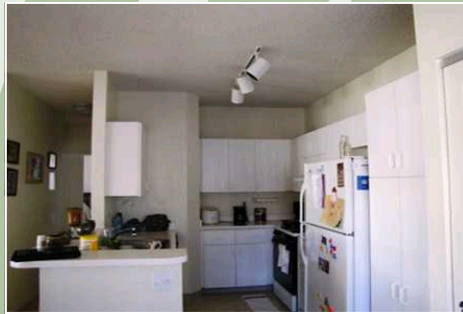


Ewa

91649 Puamaeole Street 31/A | MLS# 1005377 | \$230,000 FS



- 2 Bedroom/ 2 Bath
- 2 Parking
- Interior: 874 sq. ft.
- Open Lanai: 350 sq. ft.
- Maint. Fee: \$362 | Assn. Fee: \$35 | Mon. Tax: \$76

Ground floor, end unit, conveniently located close to BBQs and pool area. Double entry doors to master bedroom, with large oval tub. This is a HAP (Housing Assistance Program) sale and subject to lender approval. Terrific starter townhome with two parking spaces off Kolowaka Drive in Ewa Beach.

All information deemed reliable but not guaranteed.

Listed by:



Frank Diaz
REALTOR-ASSOCIATE®

(808) 723-0900
Frank.Diaz@eastoahu.com



East Oahu Realty

East Oahu Realty, Inc.
6600 Kalaniana'ole Hwy. Honolulu, HI 96825
(808) 396-2000 | Fax: (808) 396-2020

An independently owned and operated member of The Prudential Real Estate Affiliates, Inc.

